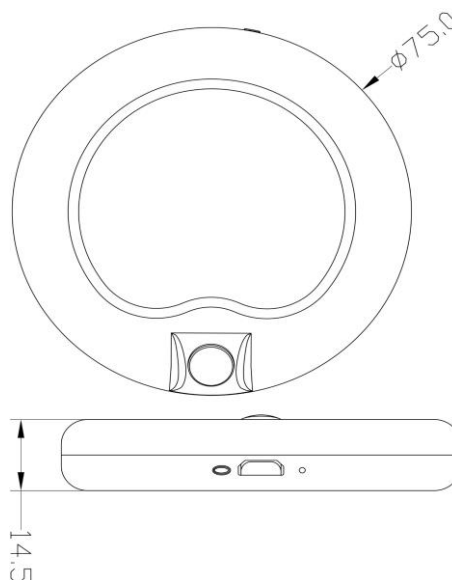


LED Wardrobe Sensor Light

Type : Battery Powered Wardrobe Light with built in PIR Sensor

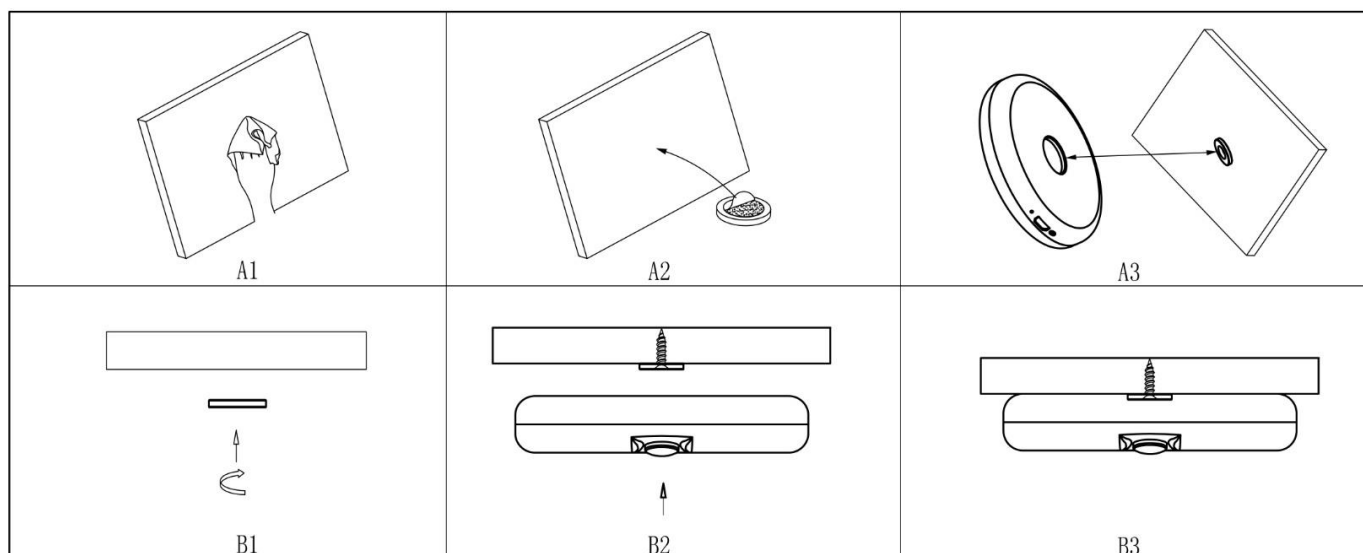
Model No : 20897-SG-WW



• Specification

Part Number	:	B4753-RLS
Color	:	Warm White
Power	:	0.5W
Charging Voltage	:	DC 5V (USB)
Charging Time	:	1 – 2 Hours
Usage Time	:	For continuous using last for 4-6 months at usage frequency 4-6 times per day
Standby Current	:	<30uA

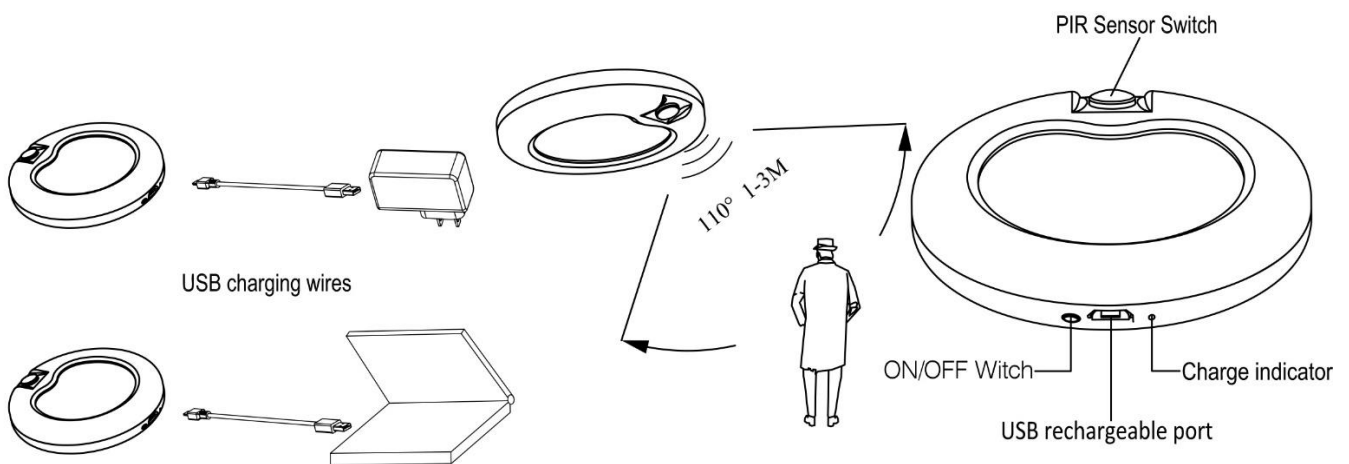
• Installation Instructions



• Function Introduction

The Switch is put on the light state manually, the light will switch on when detecting human moving within 1-3M detection range, the light will switch off after human leaving or stop moving for 15s. Once in low battery, the Switch will be in the light off state, connecting the USB for recharging, when the red light is on, the battery is charging and green light means the battery has been fully charged and it stops automatically once fully charged.

• Operating Instructions



USB Charging Parameters : 5V / 1A

The Light will switch on when detecting human moving 1-3M detection range, the light will switch off after human leaving or stop moving for 15s. Once battery ran out , it can use mobile phone charger or computer's USB for recharging, when fully charged, remove the charger for normal installation and usage.